

PROMIX[®]

CREATE THE UNDERGROUND CONNECTION



WITH MYCORRHIZAE



HEALTHY, ENHANCED
ROOT SYSTEM



FASTER
GROWTH



INCREASED
CROP YIELD



HIGHER
QUALITY

HIGH CONCENTRATION OF
VIALE SPORES ENSURES
A RAPID CONNECTION



PRO-MIX® MYCORRHIZAL INOCULANT • POWDER



- Wettable powder formulation for transplanting into containers. Compatible with different growing media.
- Highest concentration of viable spores (6000/g, 17000/oz) ensures a rapid connection between the fungi and the root system of the plant.
- Accelerates rooting, enhances nutrient and water uptake, and improves stress resistance.

*OMRI certified in the US only

HOW TO USE

1 MIX



In a container, mix 1 part of PRO-MIX® CONNECT to 1 part of water. Water must be at a maximum temperature of 25 °C (77 °F) to avoid temperature shock.

2 STIR



Stir until the slurry is homogeneous.

3 DIP



Dip the root area of the plant into the mix. A close contact allows the mycorrhizal inoculant to quickly colonize the roots of the plant.

4 TRANSPLANT



Transplant rooted cuttings and/or plant into a PRO-MIX® growing medium.



PRODUCT STORAGE: Do not freeze or expose to temperatures above 25 °C (77 °F). Store the product at constant temperature at all times between 2°C/36°F to 20°C/68°F.

WATCH HOW TO CONNECT



PRODUCT INFORMATION

	Size 250 g (8.8 oz)		Size 2.5 kg (88.1 oz)	
PRO-MIX® M. I. • Powder	Unit 250 g (8.8 oz)	Shipping box 4.5 kg (158.7 oz)	Unit 2.5 kg (88.1 oz)	Shipping box 10 kg (352.7 oz)
Product code (US)	MC025179NP	MC025179NPBX	MC250179NP	MC250179NPBX
Product code (Canada)	MC025178NP	MC025178NPBX	MC250178NP	MC250178NPBX
Units/Box	1	18	1	4

APPLICATION RATE

Container	Amount of product (g)	250 g (8.8 oz)	2.5 kg (88.1 oz)
Rooted cuttings	5	50	500
½ gallon container	15	16	165
1 gallon container	30	8	85

** Quantity may vary depending on the cutting size

INGREDIENTS

ACTIVE INGREDIENT:

ENDOMYCORRHIZAL INOCULUM – PTB297 Technology
Glomus intraradices also known as *Rhizophagus irregularis*:
6000 viable spores/g

INERT INGREDIENTS: Kaolinite, Diatomaceous earth, Perlite and Water



HEALTHY, ENHANCED ROOT SYSTEM

BENEFITS

- Better nutrients and water uptake
- Increased stress resistance

LOOK FOR

- Root development and mass
- Robust plant
- Uniform canopy



FASTER GROWTH

- Shorter vegetative time
- Greater resistance to transplant shock

- Plant height and width
- Size of the stem
- Number of ramifications



INCREASED CROP YIELD

- Increased yield
- Healthier crop

- Flower size
- Flower density
- Overall increase in biomass



HIGHER QUALITY

- Better terpene profile
- Higher cannabinoid content

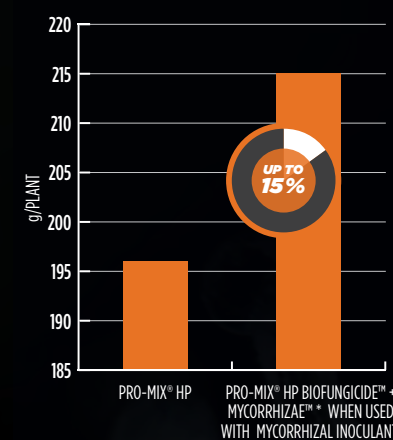
- Trichome density (frostier buds)
- Stronger aroma (smell)
- Resin level (stickiness)
- Consistency

“ I’m getting twice as much volume in the rows that we treated with the CONNECT product. ”

Mark from Heritage Farmacy

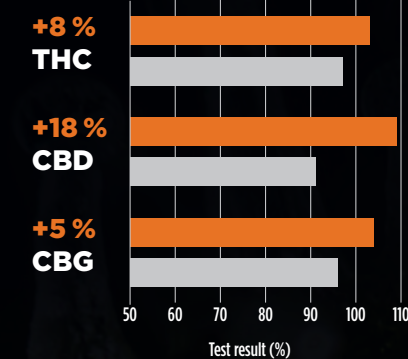
RESULTS

DRY FLOWER PER PLANT



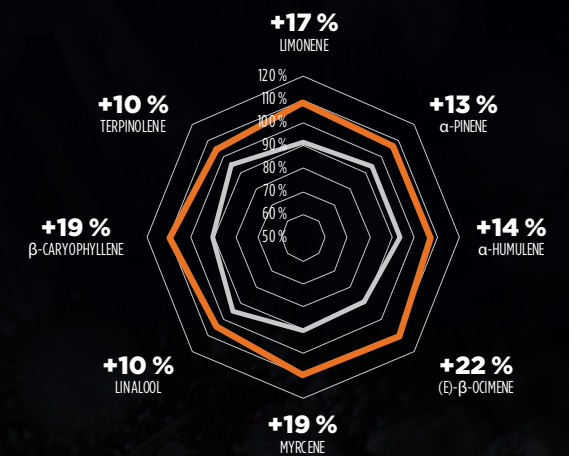
CANNABINOID CONCENTRATION

RELATIVE ABUNDANCE



TERPENE COMMON PROFILE

RELATIVE ABUNDANCE



* PRO-MIX® HP BIOFUNGICIDE™ + MYCORRHIZAE™ = BIOFUNGICIDE™ is only available in the US.

Those results are averages from multiple commercial testing done with professional growers. Results may vary depending on plant variety.

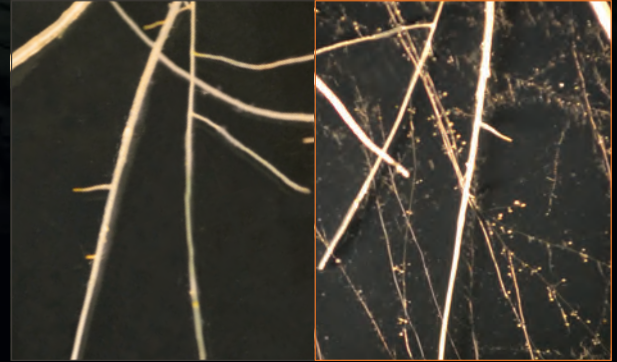
FACTS

10X MORE EFFICIENT WITH MYCORRHIZAE THAN ROOTS ALONE

“The absorptive area of mycorrhizal hyphae is approximately 10 times more efficient than that of root hairs and about 100 times more efficient than that of roots.”

Jones, C. E. 2009. Mycorrhizal fungi - powerhouse of the soil. Evergreen Farming 8:4-5

EXTEND ABSORPTION AREA



WITHOUT MYCORRHIZAE

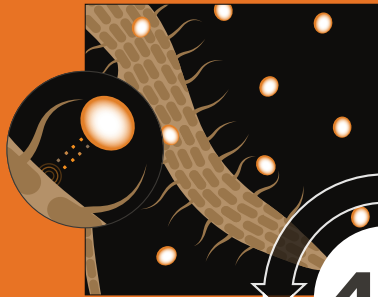
WITH MYCORRHIZAE

HOW DOES IT WORK?

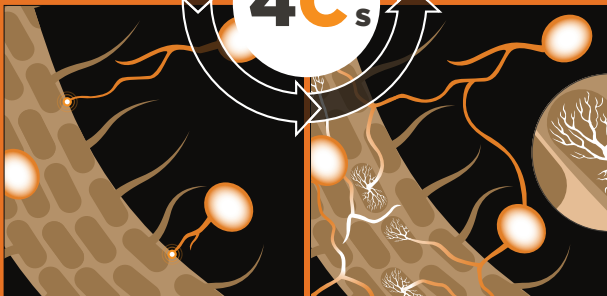
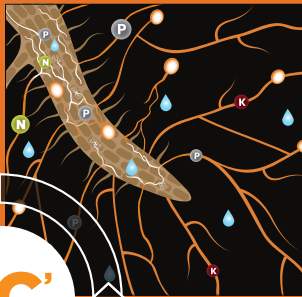
PRE-SYMBIOTIC PHASE

SYMBIOTIC PHASE

1 THE CALL



4 THE COMPLETION



2 THE CONTACT

3 THE CONNECTION



Mycorrhizae are beneficial associations between mycorrhizal fungi and roots. This is how the magic happens:

- 1 Making **THE CALL** between each other, the results being the spores germinating in the right direction, and the roots preparing themselves for the hyphae's arrival.
- 2 The hyphae will make **THE CONTACT** with the root surface and make their way inside the root cells.
- 3 **THE CONNECTION** between the fungi and the plant is established when arbuscules are formed inside root cells and fungi prepare to develop the underground network.
- 4 **THE COMPLETION** allows mycorrhizae to produce a secondary root network of filaments that will explore the soil and access more nutrients and water, and transfer them to the plant, leading to the renowned effects of mycorrhizae for cannabis plants.

LEARN MORE AND CONNECT
WITH US @**PROMIX_CANNABIS**



World Headquarters
1, avenue Premier
Campus Premier Tech
Rivière-du-Loup (Québec)
G5R 6C1 CANADA

Regional Office
200 Kelly Rd, Unit E-1
Quakertown, PA 18951
Tel.: 1 800 525-2553



VISIT [PTHORTICULTURE.COM/EN/CONNECT](https://pthorticulture.com/en/connect)

CUSTOMER SERVICE: 1 800 667-5366
services@pthorticulture.com